



## REVEALING THE EDGES

This proposal seeks to define the site by revealing and activating its edges. The following five strategies demonstrate how the site and its environs can take on functions that suit their particular characteristics and support the newly revealed wetland.

**Wetland:** The entire project site is designated as a wetland and open space preserve. The San Francisco Bay Trail wanders along the water's edge. **Restoring the wetland** serves as a counterpoint to the disparate functions in adjacent areas.

**Watershed Exchange:** All of Horseshoe Cove's watershed drains across the project site. Most of the surface water is collected and delivered to the Bay via underground culverts. Along the edge at which adjacent surface conditions (mostly asphalt paving) transition to wetlands, the culverts are day-lighted into spillways before draining into the wetlands. **Exposing the watershed** to the visitor demonstrates the continual running of freshwater into saltwater, and the unique ecosystem of a wetland/brackish condition that results.

**Fog Fence:** The presence of fog at the Golden Gate is as symbolic as the Bridge itself. The bane of tourists and visitors to the Bay's edge, the large amount of moisture in the air is taken advantage of by employing a new technology that **harvests the fog** water content. A fence made of a fine mesh scrim traverses the western ridge where the windblown fog hugs the landscape. As the wind blows through the fence, the water vapor condenses on the mesh scrim and is collected at the base of the fence, then piped by gravity to the warming hut and neighboring structures for use as potable water.

**Wind Farm:** While the fog makes solar power collection inefficient, the continual breeze blowing off the Pacific Ocean is an opportunity for **farming the wind**. High-efficiency bird-friendly windmills are distributed along the eastern ridge of the cove. The electricity produced is distributed to the warming hut as well as neighboring structures.

**Warming Hut:** A small floating structure is placed in the middle of Horseshoe Cove to serve as a café, warming shelter and information kiosk. The walkway from the wetland to the hut is submerged at high tide, creating a heightened awareness of the tidal rhythm; think Mont Saint-Michel. The 'open' and 'closed' conditions of the hut also follow this rhythm, not unlike marine organisms. The structure itself is **engaging the tide**.

## Restoring the Wetland



## Exposing the Watershed



Marsh Hawk



Salt Marsh Harvest Mouse



Mission Blue Butterfly



Spillway

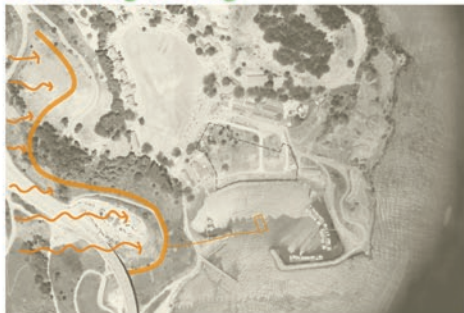


Wetland

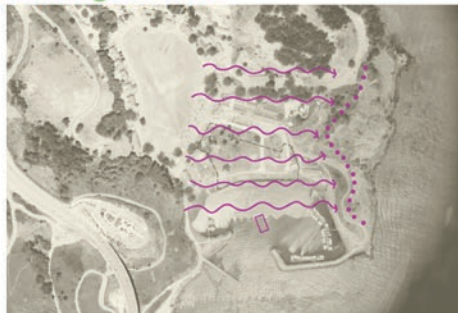




### Harvesting the Fog



### Farming the Wind



### Engaging the Tide



Running Fence



Fog Fence in Peru



Fog Fence



Altamont Pass



Windmill



Wind Farm



Closed Warming Hut



Open Warming Hut