

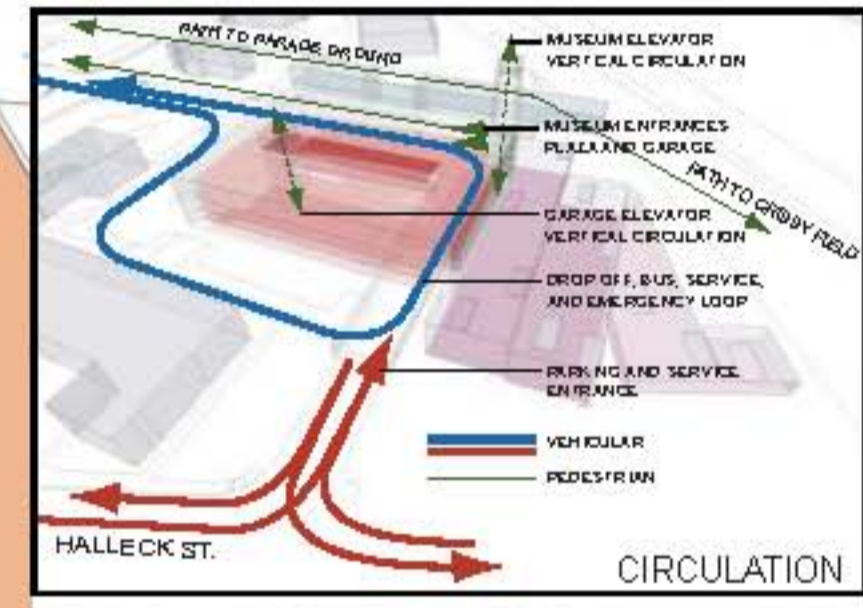
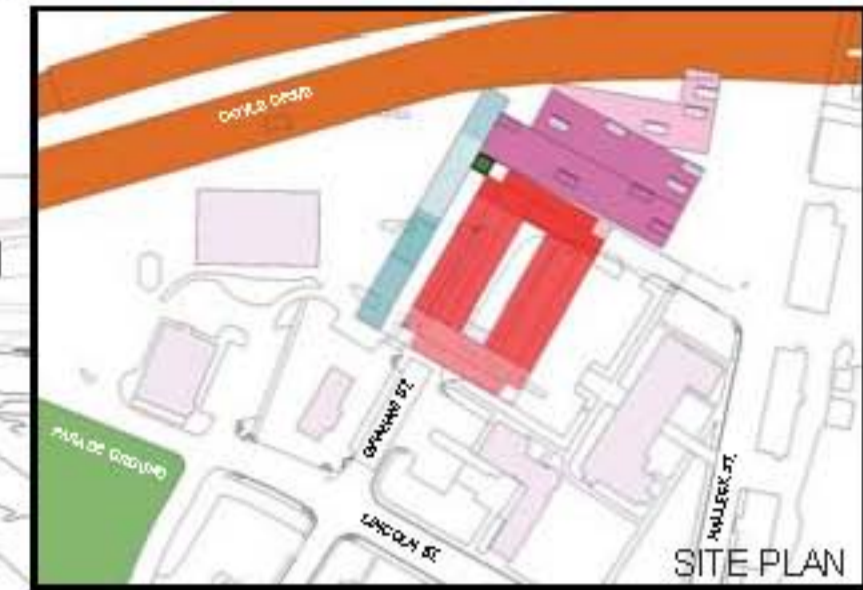
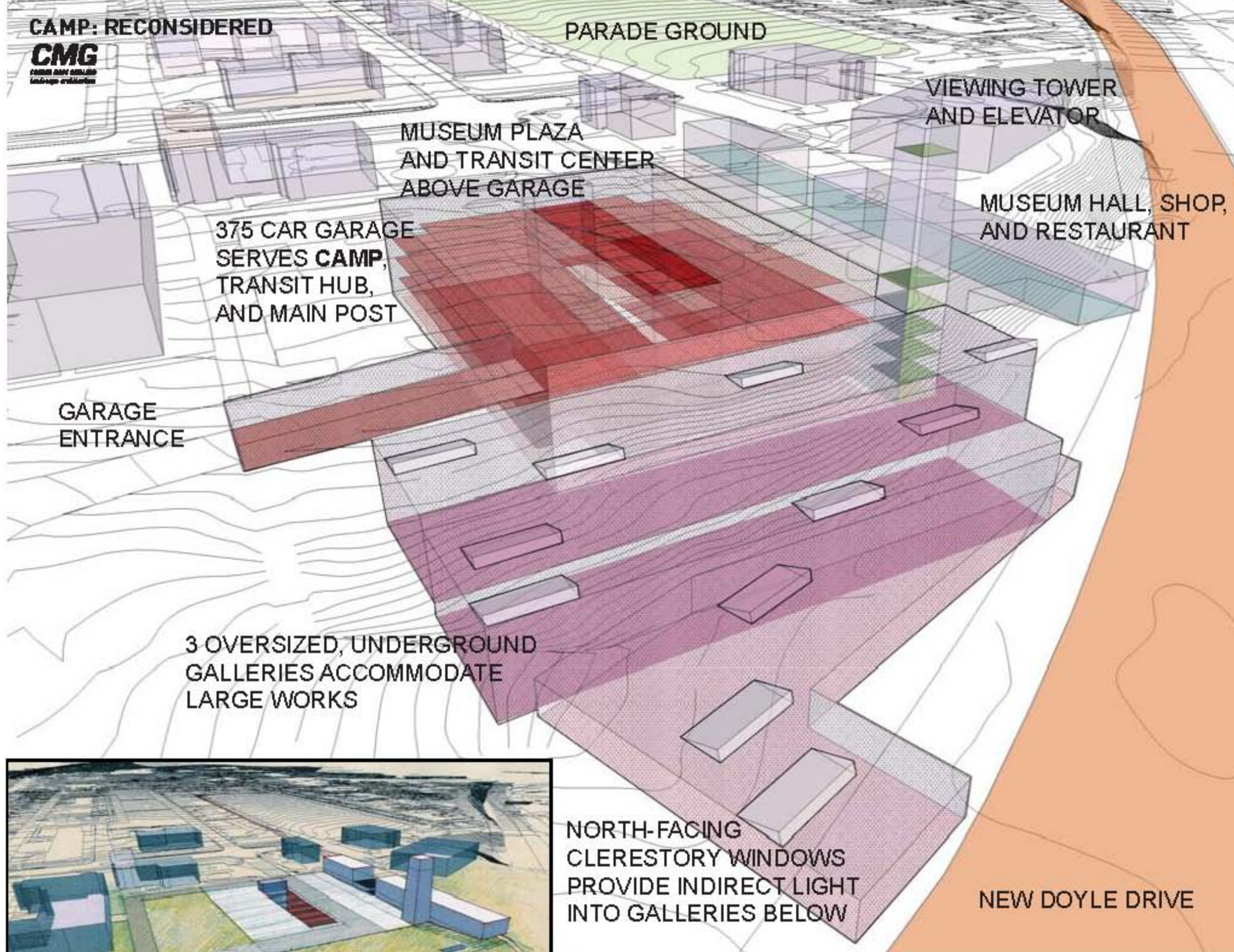
1 The Presidio is divided into various zones that reflect dominant uses and qualities. As the center of residential, commercial, and institutional activity in the Presidio, the Main Post is the most appropriate zone for CAMP.

2 The landscape and topography around the Main Post have been altered over time. Substantial fill operations have significantly modified the terminus of the Parade Ground at the northern end of the main post. The history and degree of site disruption at the bluff suggests this to be a suitable location for further modification.

3 The realignment of Doyle drive at the north end of the Main Post Parade Ground establishes a new condition of leftover/residual space. This interstitial area found between the Doyle Drive realignment and existing buildings (220, 218, 215 and 211) framing the transit center, can be occupied with infill construction.

4 The burial of Doyle Drive establishes a new landscape, which can be occupied both above ground and below. This allows for a large amount of construction not visible above ground, providing the opportunity for large museum spaces with minimal impact on the character of the historic Main Post.

BURY THE MUSEUM UNDER THE BLUFF



CAMP galleries can be as large as the main galleries at MASS MOCA (North Adams, MA), the largest in the U.S.A.

